



nature



opportunity

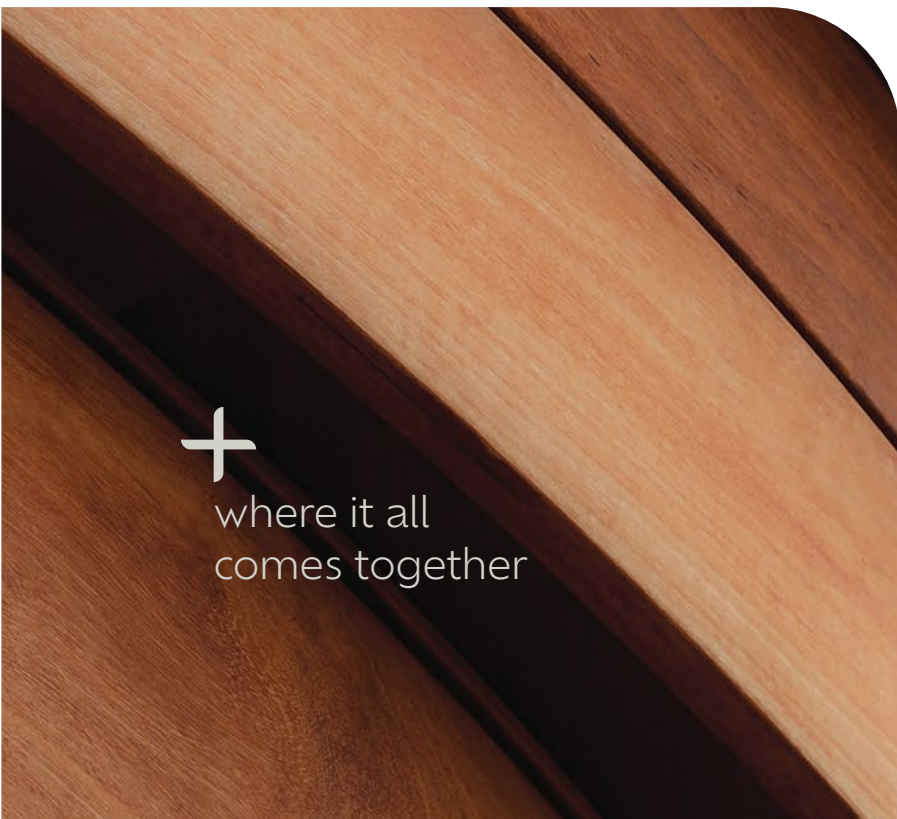


connectivity

j'den



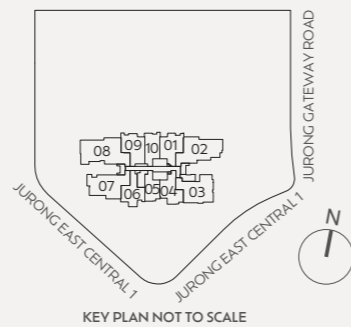
lifestyle



where it all
comes together

UNIT NO./LEVEL	01	02	03	04	05	06	07	08	09	10
40	Bs1	C(p)	C1	B1	A	B2	C2	D(p)	Bs2	As
39	Bs1	C(p)	C1	B1	A	B2	C2	D(p)	Bs2	As
38	Bs1	C(p)	C1	B1	A	B2	C2	D(p)	Bs2	As
37	Bs1	C(p)	C1	B1	A	B2	C2	D(p)	Bs2	As
36	Bs1	C(p)	C1	B1	A	B2	C2	D(p)	Bs2	As
35	Bs1	C(p)	C1	B1	A	B2	C2	D(p)	Bs2	As
34	Bs1	C(p)	C1	B1	A	B2	C2	D(p)	Bs2	As
33	Bs1	C(p)	C1	B1	A	B2	C2	D(p)	Bs2	As
32	Bs1	C(p)	C1	B1	A	B2	C2	D(p)	Bs2	As
31	Bs1	C(p)	C1	B1	A	B2	C2	D(p)	Bs2	As
30	Bs1	C(p)	C1	B1	A	B2	C2	D(p)	Bs2	As
29	Bs1	C(p)	C1	B1	A	B2	C2	D(p)	Bs2	As
28	Bs1	C(p)	C1	B1	A	B2	C2	D(p)	Bs2	As
27	Bs1	C(p)	C1	B1	A	B2	C2	D(p)	Bs2	As
26	Bs1	C(p)	C1	B1	A	B2	C2	D(p)	Bs2	As
25	Bs1	C(p)	C1	B1	A	B2	C2	D(p)	Bs2	As
24	SKY TERRACE									
23	Bs1	C(p)	C1	B1	A	B2	C2	D(p)	Bs2	As
22	Bs1	C(p)	C1	B1	A	B2	C2	D(p)	Bs2	As
21	Bs1	C(p)	C1	B1	A	B2	C2	D(p)	Bs2	As
20	Bs1	C(p)	C1	B1	A	B2	C2	D(p)	Bs2	As
19	Bs1	C(p)	C1	B1	A	B2	C2	D(p)	Bs2	As
18	Bs1	C(p)	C1	B1	A	B2	C2	D(p)	Bs2	As
17	Bs1	C(p)	C1	B1	A	B2	C2	D(p)	Bs2	As
16	Bs1	C(p)	C1	B1	A	B2	C2	D(p)	Bs2	As
15	Bs1	C(p)	C1	B1	A	B2	C2	D(p)	Bs2	As
14	Bs1	C(p)	C1	B1	A	B2	C2	D(p)	Bs2	As
13	Bs1	C(p)	C1	B1	A	B2	C2	D(p)	Bs2	As
12	Bs1	C(p)	C1	B1	A	B2	C2	D(p)	Bs2	As
11	Bs1	C(p)	C1	B1	A	B2	C2	D(p)	Bs2	As
10	Bs1	C(p)	C1	B1	A	B2	C2	D(p)	Bs2	As
9	Bs1	C(p)	C1	B1	A	B2	C2	D(p)	Bs2	As
8	Bs1	C(p)	C1	B1	A	B2	C2	D(p)	Bs2	As
7	Bs1	C(p)	C1	B1	A	B2	C2	D(p)	Bs2	As
6	Bs1	C(p)	C1	B1	A	B2	C2	D(p)	Bs2	As
5	Bs1	C(p)	C1	B1	A	B2	C2	D(p)	Bs2	As
4	Bs1	C(p)	C1	B1	A	B2	C2	D(p)	Bs2	As
3	Bs1			B1(g)	A(g)	B2(g)	C2(g)	D(p)	Bs2	As
2	COMMERCIAL/J-WALK									
1	COMMERCIAL									

- Type A(g) - 1-Bedroom With Gate
- Type A - 1-Bedroom
- Type As - 1-Bedroom + Study
- Type B1(g) - 2-Bedroom With Gate
- Type B1 - 2-Bedroom
- Type B2(g) - 2-Bedroom With Gate
- Type B2 - 2-Bedroom
- Type Bs1 - 2-Bedroom + Study
- Type Bs2 - 2-Bedroom + Study
- Type C1 - 3-Bedroom
- Type C2(g) - 3-Bedroom With Gate
- Type C2 - 3-Bedroom
- Type C(p) - 3-Bedroom + Study (Premium)
- Type D(p) - 4-Bedroom (Premium)



Garden Oasis @ Level 3

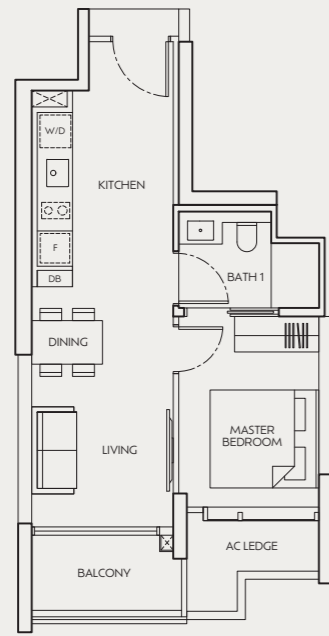


- 1 Courtyard
- 2 Lakeside Walk
- 3 Fern Garden
- 4 Water Hammocks
- 5 Swing Garden
- 6 Lake Pool (50m)
- 7 Jacuzzi Pool
- 8 Lakeside Deck
- 9 Floating Pavilion
- 10 Cascading Water
- 11 Family Deck
- 12 Nature Playground
- 13 Chill-Out Deck
- 14 Bubble Pool
- 15 Play Pool
- 16 River Creek
- 17 River Bridge
- 18 Lazy River
- 19 Water Curtain
- 20 Swing Lawn
- 21 Parkour Gym
- 22 Cardio Corner
- 23 BBQ Pavilion
- 24 Party House
- 25 Gym
- 26 Multi-Purpose Room
- 27 Social Lounge

1-BEDROOM

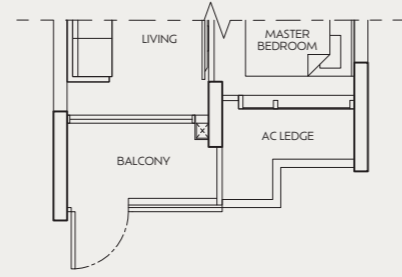
TYPE A

49 sq m / 527 sq ft
#04-05 to #23-05
#25-05 to #40-05



TYPE A(g)

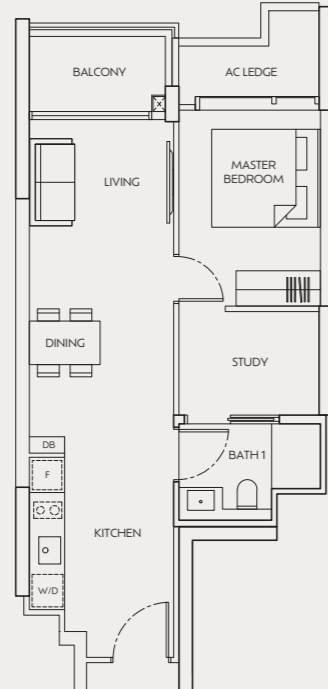
49 sq m / 527 sq ft
#03-05



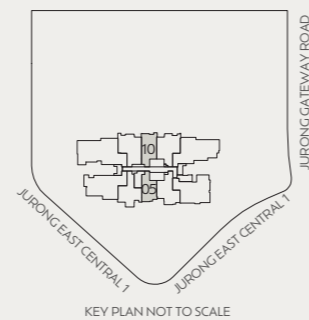
1-BEDROOM + STUDY

TYPE As

58 sq m / 624 sq ft
#03-10 to #23-10
#25-10 to #40-10



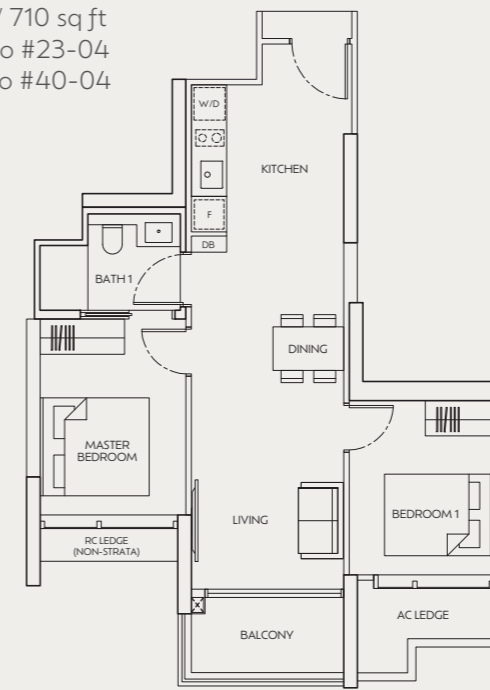
Area includes air-con (AC) ledge, balcony and strata void where applicable. Please refer to the key plan for orientation. The plans are subjected to change as may be approved by relevant authorities. All floor plans are approximate measurements only and are subjected to government re-survey. The balcony shall not be enclosed unless with the approved balcony screen. For an illustration of the approved balcony screen, please refer to the diagram annexed hereto as "Annexure A". The installation and cost of the balcony screen shall be borne by purchaser.



2-BEDROOM

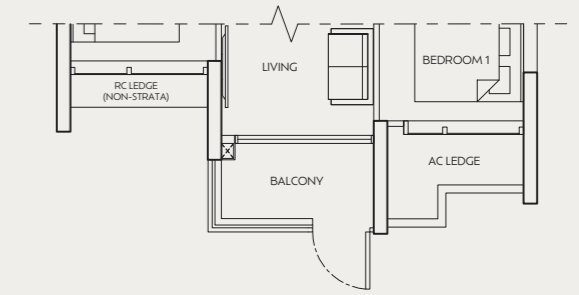
TYPE B1

66 sq m / 710 sq ft
#04-04 to #23-04
#25-04 to #40-04



TYPE B1(g)

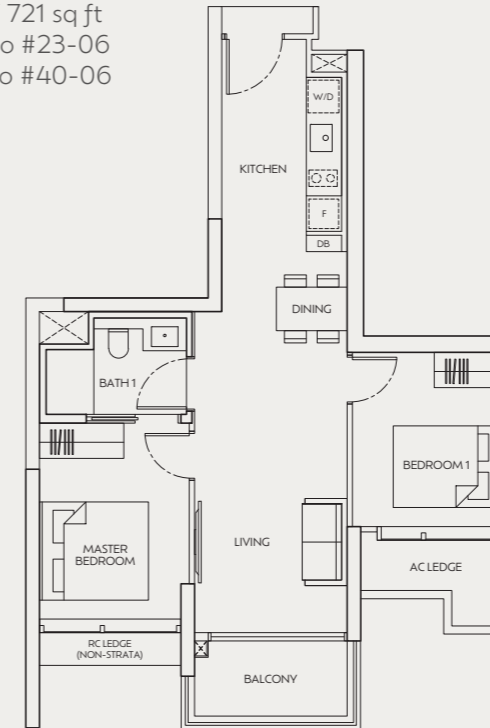
66 sq m / 710 sq ft
#03-04



2-BEDROOM

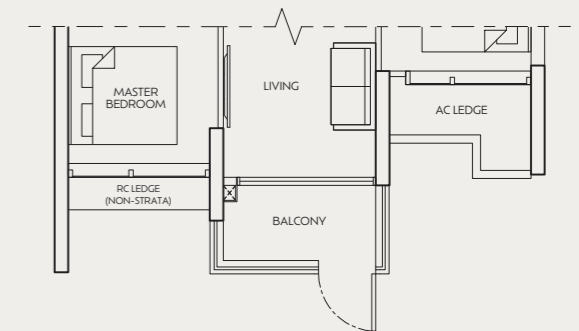
TYPE B2

67 sq m / 721 sq ft
#04-06 to #23-06
#25-06 to #40-06

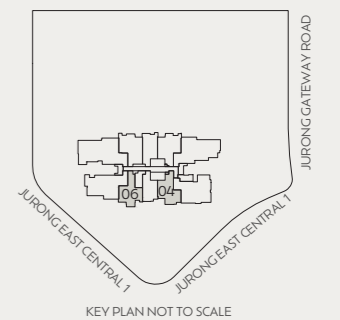


TYPE B2(g)

67 sq m / 721 sq ft
#03-06



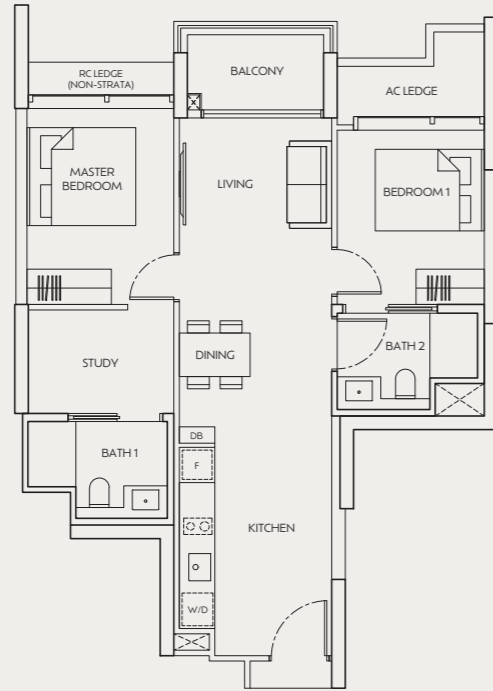
Area includes air-con (AC) ledge, balcony and strata void where applicable. Please refer to the key plan for orientation. The plans are subjected to change as may be approved by relevant authorities. All floor plans are approximate measurements only and are subjected to government re-survey. The balcony shall not be enclosed unless with the approved balcony screen. For an illustration of the approved balcony screen, please refer to the diagram annexed hereto as "Annexure A". The installation and cost of the balcony screen shall be borne by purchaser.



2-BEDROOM + STUDY

TYPE Bs1

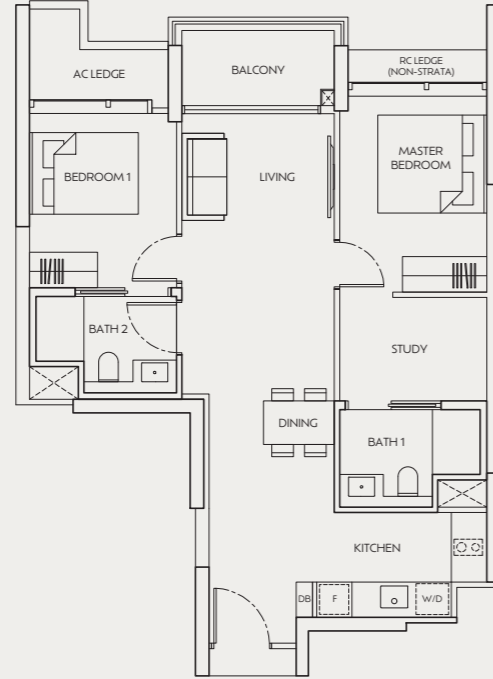
76 sq m / 818 sq ft
#03-01 to #23-01
#25-01 to #40-01



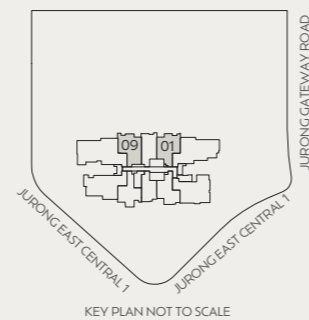
2-BEDROOM + STUDY

TYPE Bs2

79 sq m / 850 sq ft
#03-09 to #23-09
#25-09 to #40-09



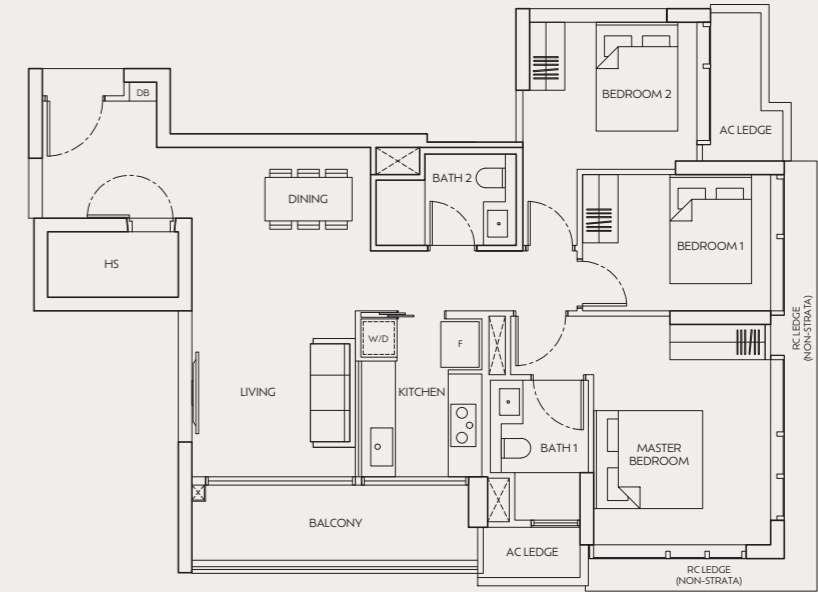
Area includes air-con (AC) ledge, balcony and strata void where applicable. Please refer to the key plan for orientation. The plans are subjected to change as may be approved by relevant authorities. All floor plans are approximate measurements only and are subjected to government re-survey. The balcony shall not be enclosed unless with the approved balcony screen. For an illustration of the approved balcony screen, please refer to the diagram annexed hereto as "Annexure A". The installation and cost of the balcony screen shall be borne by purchaser.



3-BEDROOM

TYPE C1

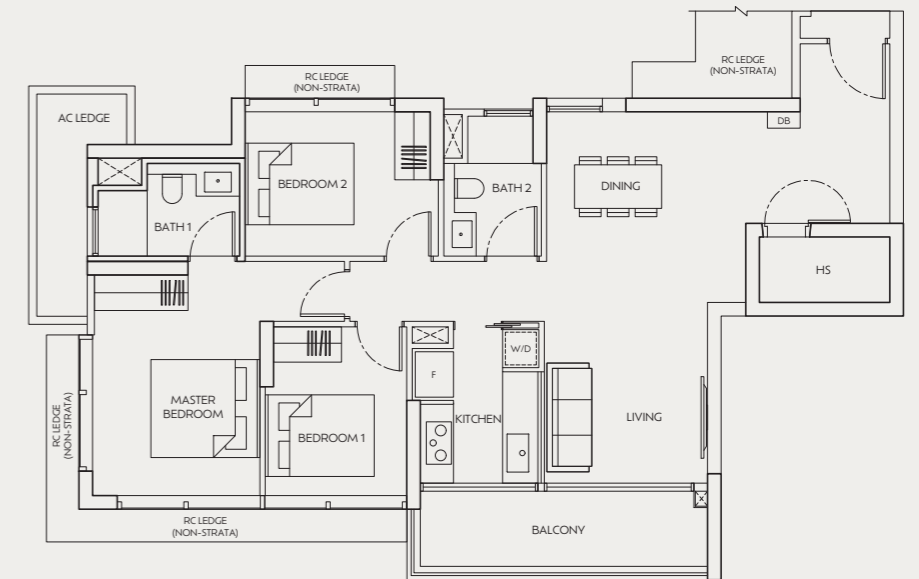
106 sq m / 1,141 sq ft
#04-03 to #23-03
#25-03 to #40-03



3-BEDROOM

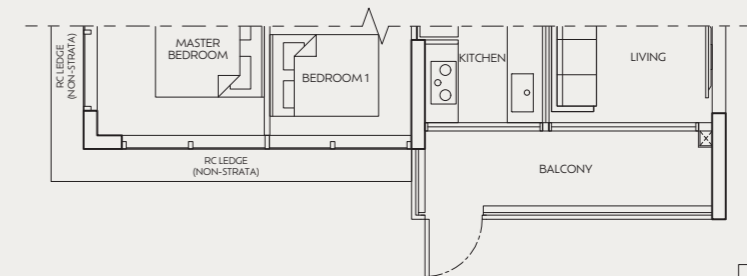
TYPE C2

110 sq m / 1,184 sq ft
#04-07 to #23-07
#25-07 to #40-07

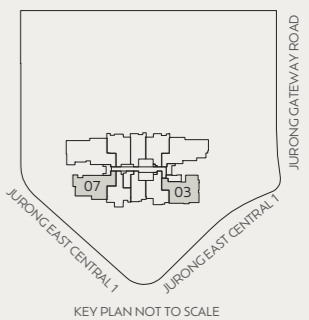


TYPE C2(g)

110 sq m / 1,184 sq ft
#03-07



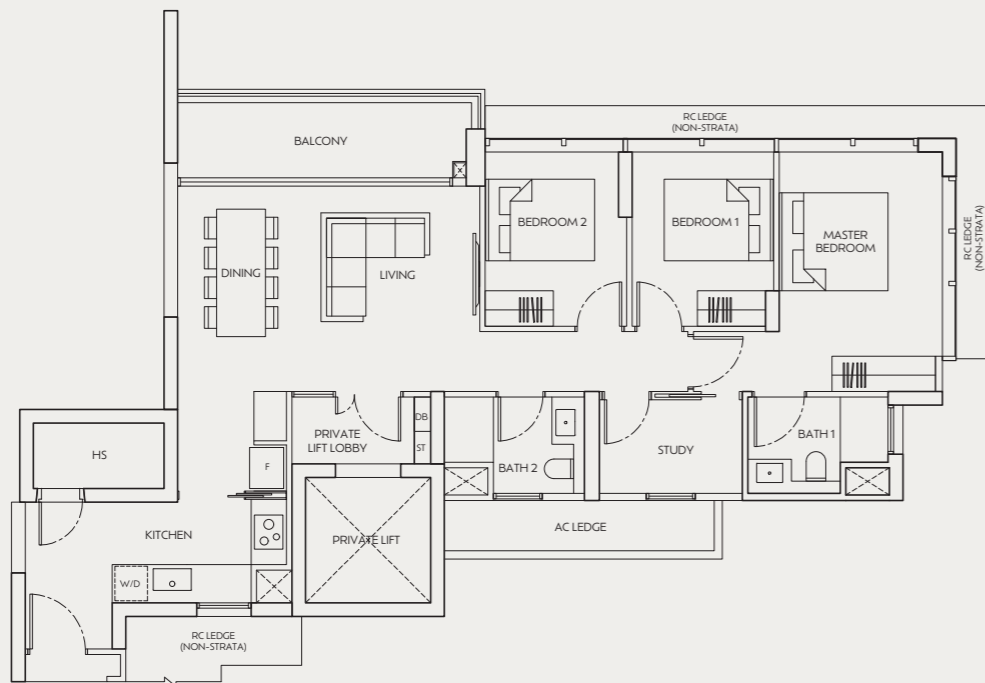
Area includes air-con (AC) ledge, balcony and strata void where applicable. Please refer to the key plan for orientation. The plans are subjected to change as may be approved by relevant authorities. All floor plans are approximate measurements only and are subjected to government re-survey. The balcony shall not be enclosed unless with the approved balcony screen. For an illustration of the approved balcony screen, please refer to the diagram annexed hereto as "Annexure A". The installation and cost of the balcony screen shall be borne by purchaser.



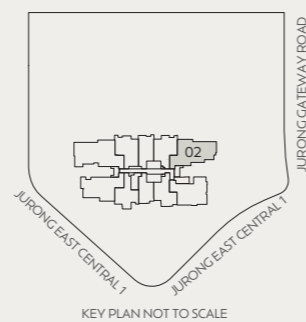
3-BEDROOM + STUDY (PREMIUM)

TYPE C(p)

117 sq m / 1,259 sq ft
 #04-02 to #23-02
 #25-02 to #40-02



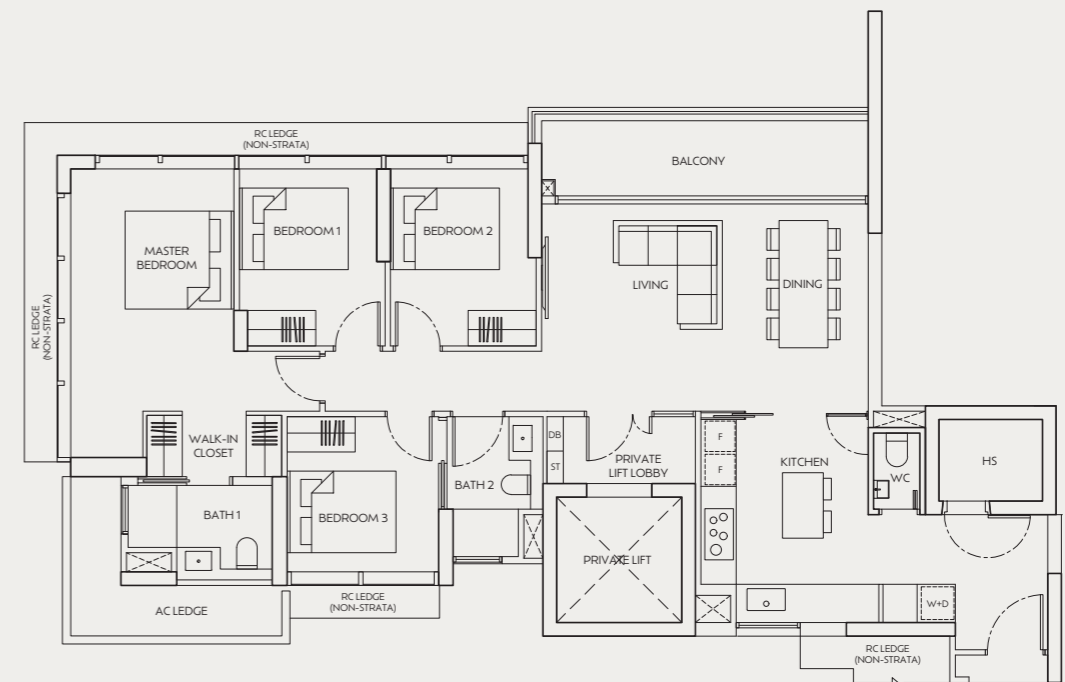
Area includes air-con (AC) ledge, balcony and strata void where applicable. Please refer to the key plan for orientation. The plans are subjected to change as may be approved by relevant authorities. All floor plans are approximate measurements only and are subjected to government re-survey. The balcony shall not be enclosed unless with the approved balcony screen. For an illustration of the approved balcony screen, please refer to the diagram annexed hereto as "Annexure A". The installation and cost of the balcony screen shall be borne by purchaser.



4-BEDROOM (PREMIUM)

TYPE D(p)

138 sq m / 1,485 sq ft
 #03-08 to #23-08
 #25-08 to #40-08



Area includes air-con (AC) ledge, balcony and strata void where applicable. Please refer to the key plan for orientation. The plans are subjected to change as may be approved by relevant authorities. All floor plans are approximate measurements only and are subjected to government re-survey. The balcony shall not be enclosed unless with the approved balcony screen. For an illustration of the approved balcony screen, please refer to the diagram annexed hereto as "Annexure A". The installation and cost of the balcony screen shall be borne by purchaser.

